



Accessibility Guide for Field Barn

info@longviewcottages.co.uk, www.longviewcottages.co.uk

Contact for accessibility enquiries:

Andrea Krizan 07922431817 (Hospitality Manager)



Welcome

At Field Barn we want to make everyone's stay as enjoyable as possible and are committed to providing suitable access for all our guests, whatever their individual needs. We aim to accurately describe our facilities and services to give you the confidence to book the right property for your specific requirements.

All our properties are rated by VisitEngland under the National Accessible Scheme however Field Barn is awaiting to be rated.

General

Parking

- There is private parking for up to four vehicles, the parking area is gravel. Luggage can be unloaded in the car parking area approximately 200cm away from the door.



Access

Access to the main entrance is levelled path that is gravel. The path leads to the gate that is 89cm wide and there is patio inside the garden. The patio is step free.



Main entrance

- There is 1 step into the kitchen area
- The door is approx. 76cm wide.
- The main door is side hung and manual.
- When you arrive, we can help carry your luggage if needed (please request this at the time of booking)



Side entrance

- There is another entrance to the property via living room area. There is a sliding door that is 106 cm wide. There is one single step that is 13cm high



Bedroom entrance

- There is a patio in front of the whole house. There is another door to the property via bedroom. The door is approx. 74cm wide and there is one step 13cm high. The main door is side hung and manual.



Getting around inside

Self-catering kitchen & Seating area

- We have an open plan kitchen / dining / seating area

When coming into the property through the main entrance, there is 130cm gap between the nearest wall and the table



There is 70cm gap from the table to the fridge and again 70cm gap from the table to the sink. This can be made bigger as the table can be moved.



The dining table is 76cm high. The dining chairs are 45cm high and the back is 35 cm high from the seat. Kitchen units are 93cm high.

There is stone floor with underfloor heating.

Seating area



 Hearing

The TV has subtitles



The sofa is 38cm high and 80cm deep in the middle area. The deepest ends of the sofa are about 120cm. The gap between the sofa and the sliding door is 100cm.

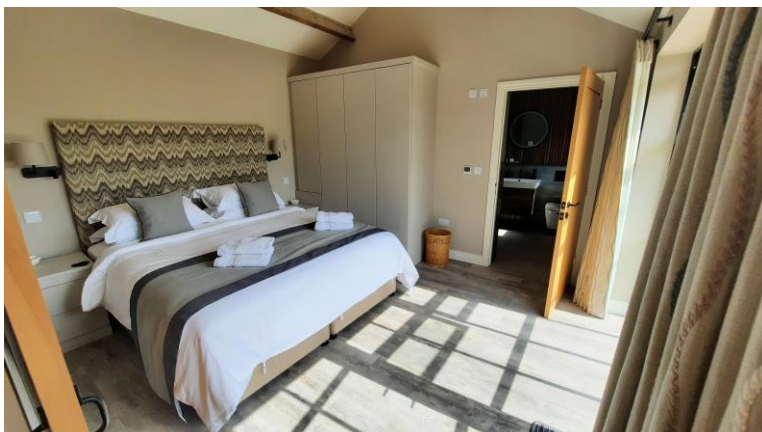


Bedroom

The property has bedroom. There is a super king size bed. The door from the living room into the bedroom is a sliding door and it is 80cm wide. The floor is one level there is no threshold.



- The bed is 60cm high.
- There is a bedside table on each side of the bed. The bedside tables are 61cm high and 44cm wide.
- The space between the bed and the wall on the left hand side is 55cm
- The space between the bed and the wardrobe on the right hand side is 50cm.



En-suite bathroom

There is a lovely, good size luxury bathroom with a large shower



- The toilet is 45cm high and it is situated 19cm from the wall and 16cm from the sink
- The sink is 82cm high and the gap between sink and the shower screen is 13cm
- The shower has got opening of 60cm. The length of the shower is 177cm and the width is 77cm
- There is no threshold between the bedroom and bathroom and the shower tray is laid in the floor so it is almost one level.

Getting around outside

There is a patio that runs along the property.



The outdoor seating area is covered and there is one step 14cm high.



There is a comfortable sofa and outdoor dining table as well as outside log burner and a gas BBQ.





Garden

The property has a lovely fully enclosed garden. This is mostly plants and beds.



There is a door to a shed on the right-hand side of the property. The door is 59cm wide. The shed has cleaners equipment and a washer/dryer for guests to use.

Getting here

Address:

Field Barn
Little Canwood
Checkley,
HR14NF

Travel by taxi

- You can get a taxi with Blue Line by calling 01432343435. The taxi company has a wheelchair accessible vehicle.

Customer care support

Accessibility equipment

- We can provide a shower chair, toilet seat height raiser.
- Hirers of Equipment TPG Disabled Aids – 01432 351666
- The hospitality manager has NVQ L2 in Health and Social Care and is available 24 hours a day in case of emergency
- Guest information file gives details of local services and emergency procedures.
- Mobile phone reception is variable depending on your network.

In case of emergency, please call the Hospitality Manager, (24/7) who has NVQ L2 in Health and Social Care.